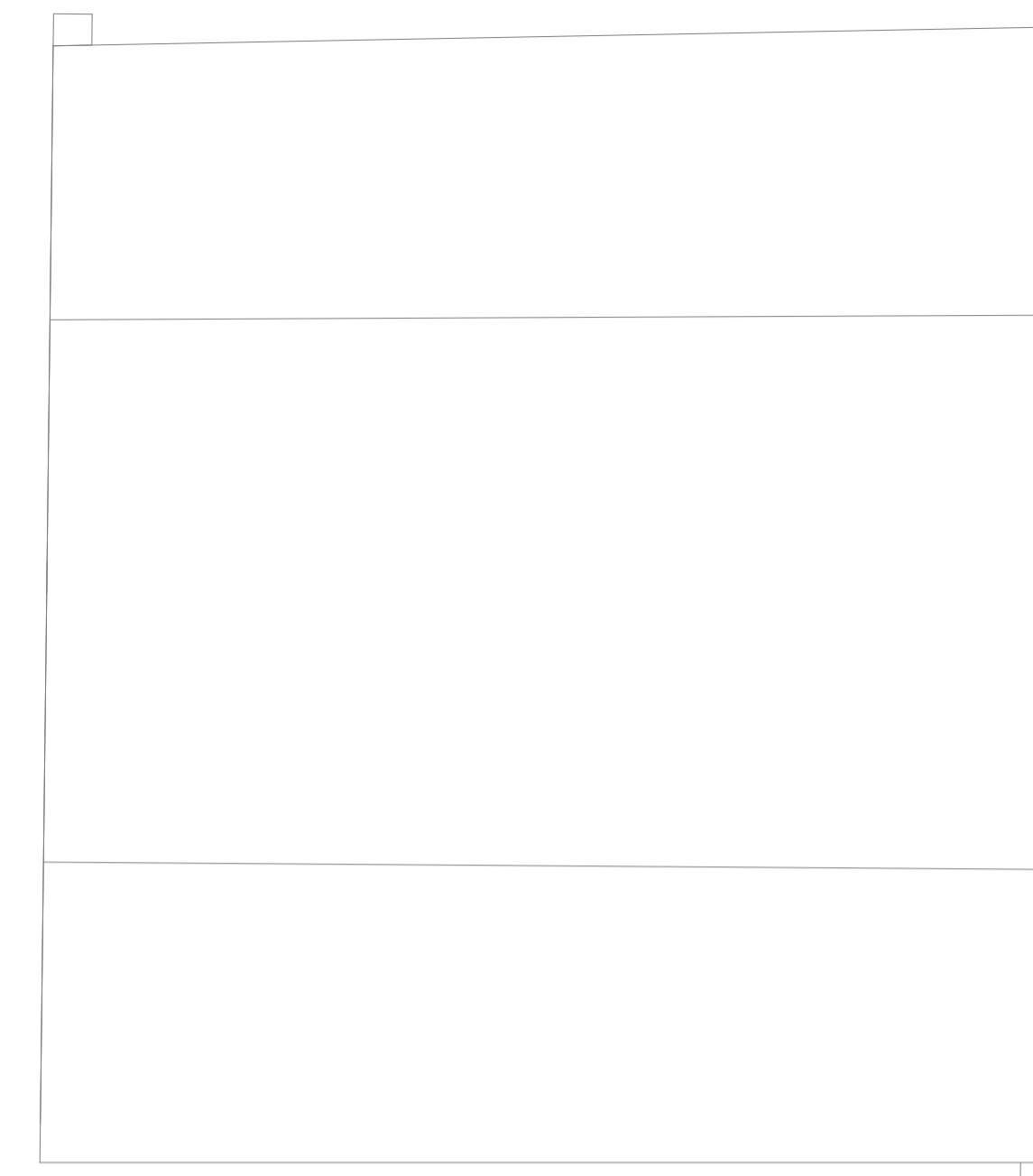


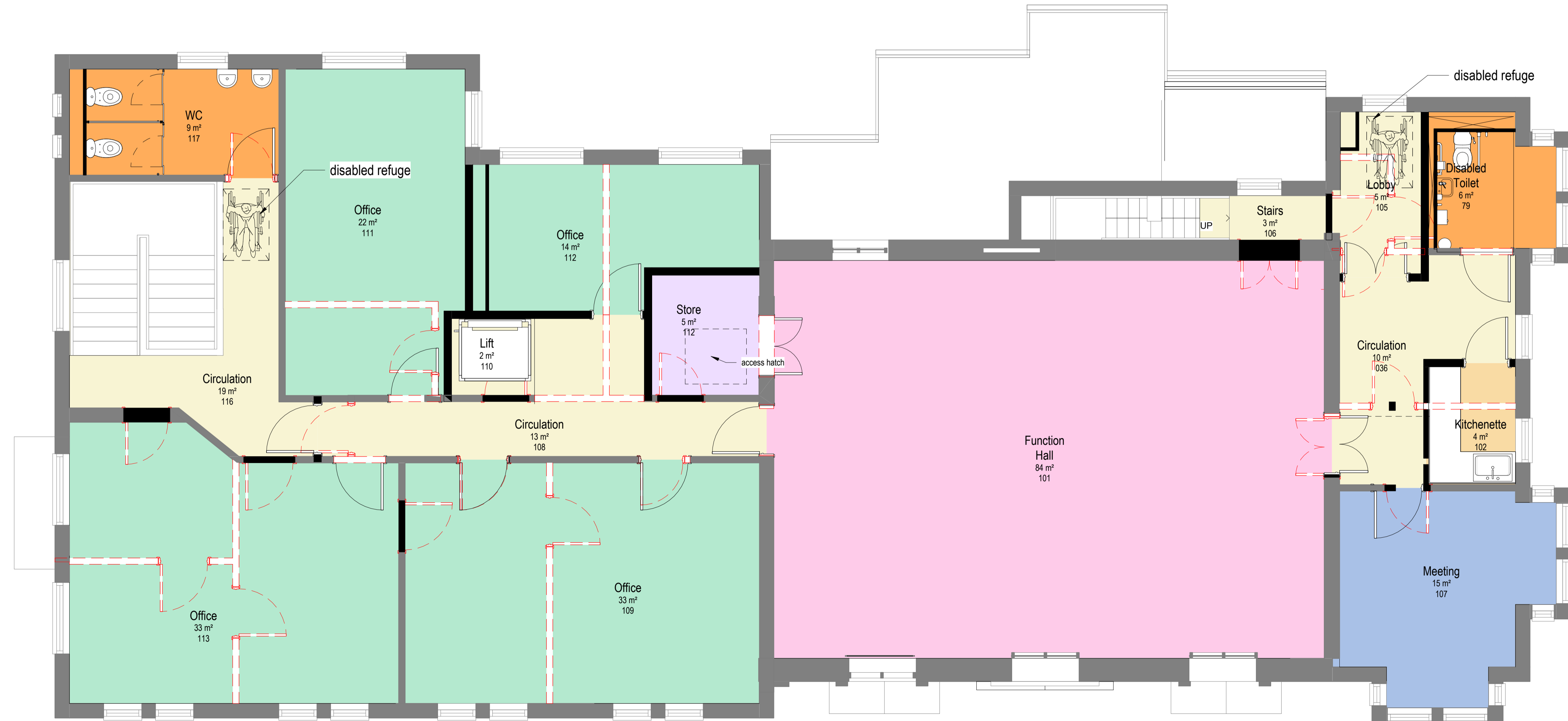
ASCH007 - Room Area Schedule Proposed First Floor			
Level	Number	Name	Area
Level 01			
Level 01	036	Circulation	10 m <sup>2</sup>
Level 01	79	Disabled Toilet	6 m <sup>2</sup>
Level 01	101	Function Hall	84 m <sup>2</sup>
Level 01	102	Kitchenette	4 m <sup>2</sup>
Level 01	105	Lobby	5 m <sup>2</sup>
Level 01	106	Stairs	3 m <sup>2</sup>
Level 01	107	Meeting	15 m <sup>2</sup>
Level 01	108	Circulation	13 m <sup>2</sup>
Level 01	109	Office	33 m <sup>2</sup>
Level 01	110	Lift	2 m <sup>2</sup>
Level 01	111	Office	22 m <sup>2</sup>
Level 01	112	Store	5 m <sup>2</sup>
Level 01	112	Office	14 m <sup>2</sup>
Level 01	113	Office	33 m <sup>2</sup>
Level 01	116	Circulation	19 m <sup>2</sup>
Level 01	117	WC	9 m <sup>2</sup>
Level 01: 16			277 m <sup>2</sup>
Grand total: 16			277 m <sup>2</sup>



Notes:

Department Legend

<span style="display:inline-block; width:15px; height:15px; background-color:orange; border:1px solid black;"></span> Breakout/kitchen
<span style="display:inline-block; width:15px; height:15px; background-color:yellow; border:1px solid black;"></span> Circulation
<span style="display:inline-block; width:15px; height:15px; background-color:lightcoral; border:1px solid black;"></span> Main hall
<span style="display:inline-block; width:15px; height:15px; background-color:lightblue; border:1px solid black;"></span> Meeting Room
<span style="display:inline-block; width:15px; height:15px; background-color:lightgreen; border:1px solid black;"></span> Office
<span style="display:inline-block; width:15px; height:15px; background-color:lightpurple; border:1px solid black;"></span> Storage
<span style="display:inline-block; width:15px; height:15px; background-color:orange; border:1px solid black;"></span> WCS



**CO-ORDINATION NOTE:**

The information on this drawing is still subject to the final co-ordination of structure / sub-structure, M&E, FF&E and kitchen design and to review with the Building Control Body and the Fire Specialists.

It is also subject to more detailed information to be provided by means of specialist surveys, to depict a better picture of the existing and the works required. Results are awaited from the following surveys:

- building condition survey
- measured survey
- intrusive structural survey
- damp survey
- asbestos survey
- drainage CCTV

Refer to Architect's schedule of works and specifications for more details regarding the works on the individual elements.  
Refer to M&E engineer for works on existing services and installation of new mechanical and electrical fixtures.



Amendments

No.	Description	Date	Issued by
4	Issued for tender	22/03/2021	GM
3	Issued for information	19/03/2021	GM
2	Issued for information	16/03/2021	GM
1	Issued for information	16/03/2021	GM

Use figured dimensions only. All levels and dimensions to be checked on site. This drawing is to be read in conjunction with all other relevant drawings and specifications.  
© Novium Limited. All rights reserved.

**NOVIUM ARCHITECTS**

Corn Exchange  
Baffins Lane  
Chichester  
PO19 1BF

T 01243 558750  
info@novium.com  
www.novium.com

Project Name:  
**Masters House**

Dwg Reference:  
**Proposed First Floor GA plan**

Drawn: GM Checked: Checker  
Scale: 1 : 50 @ A1 Project Issue Date: March 2021

Project:	Originator:	Volume:	Level:	Type:	Role:	Number:
Z0513	NOV	V1	01	DR	A	03011

Status: **S3** Suitability Description: **Issued for Tender** Orig Paper Size: **A1**  
Revision: **P0.4** Revision Description: **INFORMATION** Novium Job No: **Z0513**